



OPERATION

The material enters the unit in the primary separation section. All the heavy particles drop into the storage area.

Then, only the finest particles rise into the secondary filter area. The dust is removed and the cleaned air passes up through the exhauster and out of the unit. When the filters are shaken the dust falls into the storage area, so there is only one dust pick-up point.

Nothing goes through the exhauster but clean air. This not only protects and extends exhauster life, but also eliminates risk of fire caused by sparks generated when material hits exhauster blades.

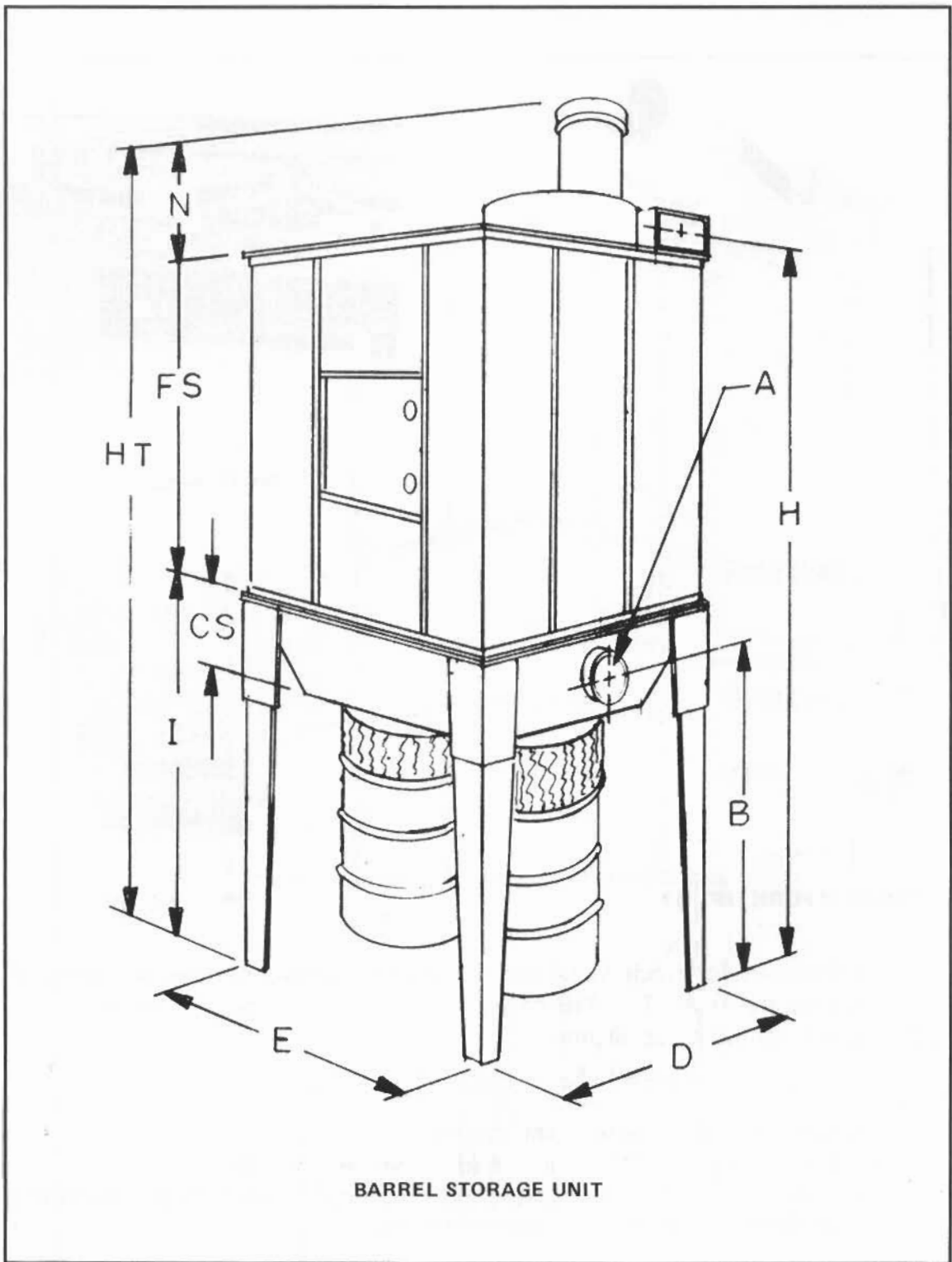
FEATURES

- Highly efficient performance.
- Fits into low ceiling areas, yet with minimal amount of floor space.
- Can be installed inside or outside the building.
- Easy to empty the collected waste.
- Flexible in design with capacities to fit all types of operations.
- Practically no maintenance.
- Totally enclosed in steel for fire protection and filter bag protection.
- Easily installed by inexperienced personnel.
- Manual shaking mechanism.
- "Pull thru" type system protects fan from damage.
- 500 to 3,900 C.F.M.
- All sections of the unit readily accessible.
- Handles hot particles in metal-working trade (with special filter media).
- Shipped completely assembled. (Legs removed).
- Low initial cost.
- Secondary multi-bag type filtration.
- Retains warm air in plant.
- Several storage variations available.

SPECIFICATIONS (Subject to change without notice.)

Dimensions are approximate. Check with factory for exact dimensions.

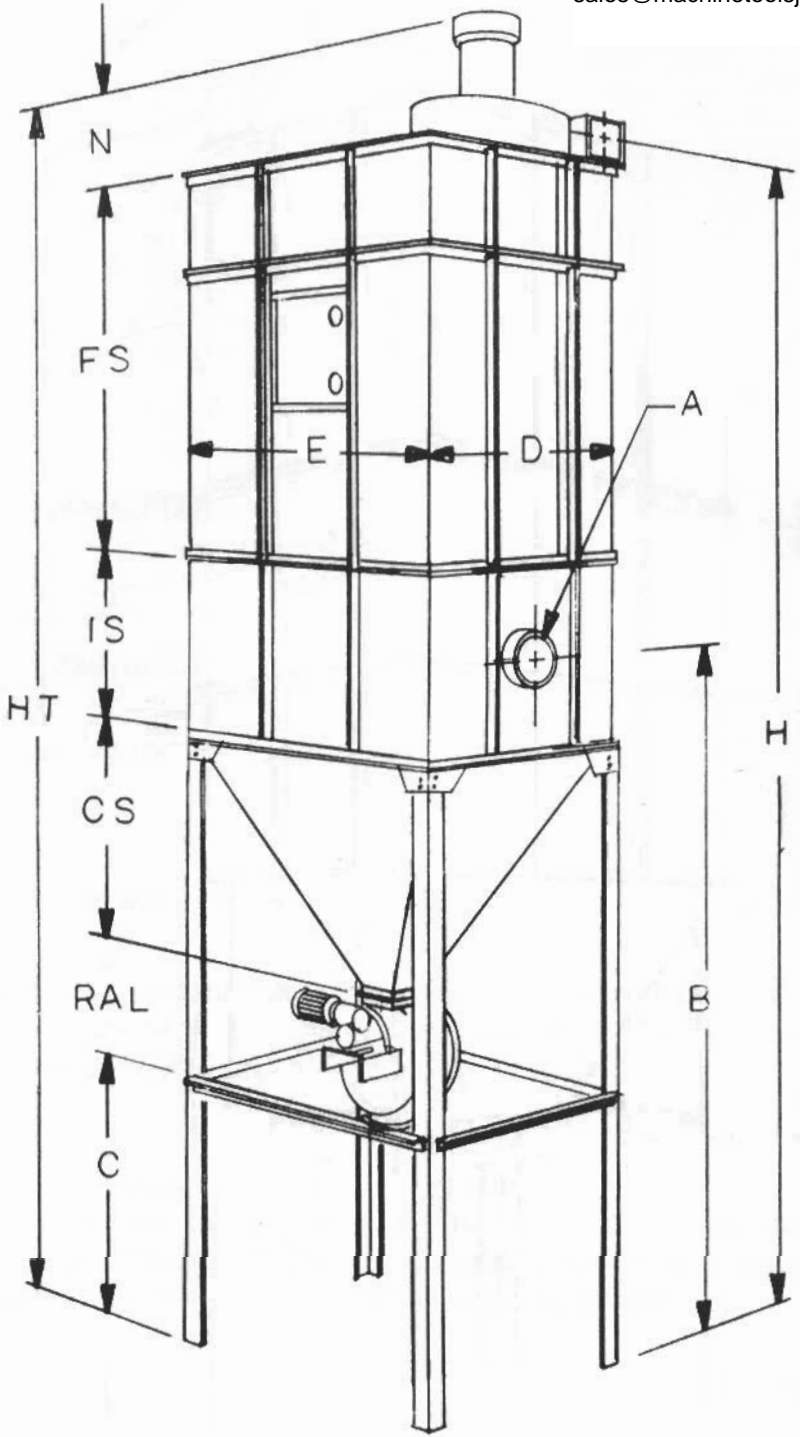
MODEL	A	B	C	CS	D	E	FS	H	HT	I	IS	N	SS	WT
MRM-7-2D	7	50	—	13%	48%	54%	49%	111%	125%	58%	—	17%	—	783
MRM-9-2D	9	50%	—	13%	48%	54%	61%	124%	142%	58%	—	22%	—	872
MRM-10-2D	10	51	—	13%	48%	54%	73%	137	157%	58%	—	25%	—	1064
MRM-12-4D	12	66%	—	30	54	72	61%	142%	163	75	—	26%	—	1399
MRM-7-RAL	7	126	51	38	48%	54%	49%	186	202	—	18	17%	—	1196
MRM-9-RAL	9	126	51	38	48%	54%	61%	201	218%	—	18	22%	—	1285
MRM-10-RAL	10	126	51	38	48%	54%	73%	213%	234%	—	18	25%	—	1477
MRM-12-RAL	12	161	62	53%	54	72	61%	247%	268%	—	37	26%	—	2031
MRM-7-50H	7	124	51	33%	48%	54%	49%	185%	200%	—	18	17%	31	1679
MRM-9-80H	9	142	51	33%	48%	54%	61%	216%	235%	—	18	22%	49	1820
MRM-10-80H	10	142	51	33%	48%	54%	73%	230%	251	—	18	25%	49	2012
MRM-12-110H	12	166	62	49%	54	72	61%	252%	273%	—	37	26%	37	2777
MRM-7-33B	7	50	—	13%	48%	54%	49%	111%	125%	58%	—	17%	—	1193
MRM-9-33B	9	50%	—	13%	48%	54%	61%	124%	142%	58%	—	22%	—	1282
MRM-10-33B	10	51	—	13%	48%	54%	73%	137	157%	58%	—	25%	—	1474
MRM-12-42B	12	66%	—	30	54	72	61%	142%	163	75	—	26%	—	1809



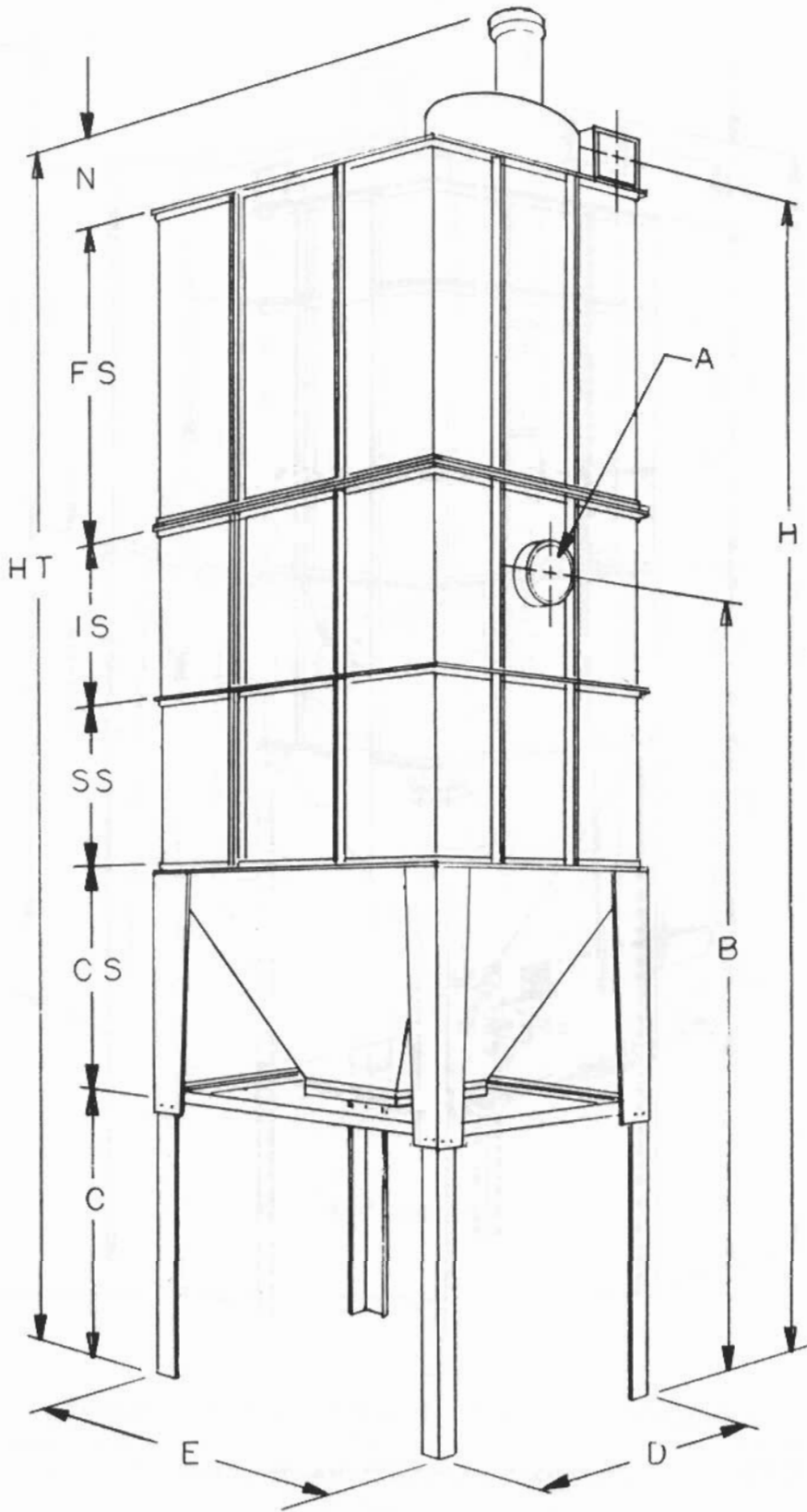
SPECIFICATIONS COMMON TO ALL MODELS

MODEL	"A" INLET	H.P.	NO. BAGS	CLOTH AREA	CFM	PIPE DROP CAPACITY
MRM-7	7"	3	30	156 Sq. Ft.	1,200 at 5" W.G.	(3) 4" or (2) 5" or (1) 7"
MRM-9	9"	5	30	206 Sq. Ft.	1,750 at 5" W.G.	(5) 4" or (3) 5" or (2) 6"
MRM-10	10"	7½	30	256 Sq. Ft.	2,600 at 6" W.G.	(6) 4" or (4) 5" or (2) 7"
MRM-12	12"	15	48	352 Sq. Ft.	3,900 at 8" W.G.	(8) 4" or (5) 5" or (4) 6"

JWK Machinery Sales Co, Inc.
2837 Lower Breckenridge Loop NW
Salem, OR 97304
503-581-1516
FAX 775-618-5508
sales@machinetoolsjwk.com



ROTARY AIR LOCK DISCHARGE



STORAGE HOPPER UNIT